

Split-Lok™ Padlock



The Split-Lok™ is a self-locking, tamper indicating plastic seal with a unique hinge design.

APPLICATIONS

- Electric Meters
- ATM Cassettes
- Tool Boxes
- Pouches
- Zippered Money Bags
- Carts

FEATURES

- Body with thin central membrane splits if attacked or tampered
- Wire scored at center for ease of removal
- Wire ends retained in plastic body on removal

MATERIAL

Body: Polypropylene w/ UV Inhibitor

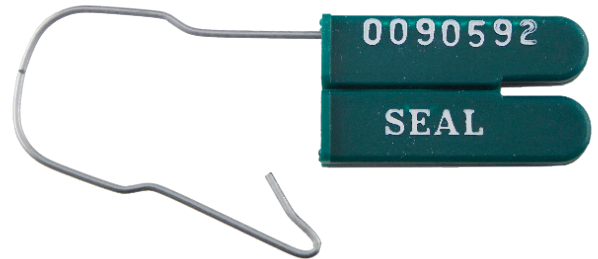
Wire Hasp: .047" (1.2mm) diameter in galvanized or stainless steel.

DIMENSIONS

1.54" (39mm) x 1" (25mm)

MARKING/PRINTING

- Heat stamped with company name/logo and 7 digits



Seals shown not actual size.

Split-Lok™ Padlock



SECUR-T

STANDARD COLORS

Red / Dk Blue / Blue / Dk Green / Green / White / Yellow / Orange / Pink / Purple / Grey / Black



PACKAGING

Standard Packaging: 1,000/Box – 5,000/Carion
Carton Dimensions: 41" x 14" x 11" (102.5cm x 35cm x 28cm)
Carton Weight: Gross: 58 lbs (26 kg)

Special Packaging:
100/Box - 2,500/Carion
100/Wire - 1,000/Box - 5,000/Carion
100/Wire - 1,000/Box - 2,500/Carion

